

# NachSpielZeit

ENGLISH

8 Nov 2022 - 23 Jan 2023

rk – Galerie für zeitgenössische Kunst im Ratskeller

Artists: Esther Ernst, MITKUNSTZENTRALE, ON/OFF, Orekari Estudio & Salomé Wackernagel, Santiago Cirugeda (Recetas Urbanas), Tobias Purfürst

Curators: Susanne Bosch and Georg Zolchow

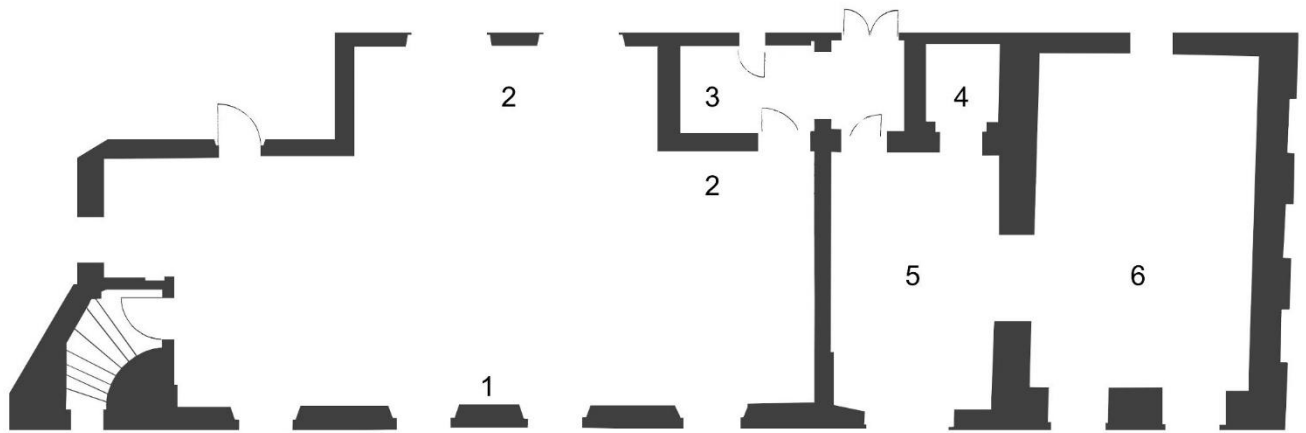
<https://nachspielzeitberlin2022.wordpress.com/>

*NachSpielZeit* is dedicated to questions of how we see and understand our cities and neighbourhoods; how we interact with them. The exhibited artistic positions deal with both the status quo and the utopian potential of urban space. Some of the works refer directly to the Fennpfuhl district of Lichtenberg.

The view of our cities and neighbourhoods can no longer take place without considering global changes. It is clear that maintaining the current status ("everything should stay as it is") must be ruled out for the future. How can transformation processes be thought about and influenced? In this context, (transdisciplinary) artistic perspectives are also important, as through them, spaces of possibility as well as utopian potentials can be explored with far greater freedom, with the direct involvement of local actors. In this context, the playful-experimental also takes on a central significance as it creates spaces to rethink contexts and situations. The playful is a framework to include the impossible. In the urban context, it can be possible to make current situations and new paths visible by freely dealing with what is already there, by testing and experimenting - and ideally to have fun in the process.

*NachSpielZeit* invites six artistic positions that deal with concrete contexts and different perspectives on urban contexts. With the ability to give form to what is found and what is to come, the artistic approaches encourage participation in the joint design of shared living spaces - for cities and neighbourhoods under the auspices of care and concern for the environment and co-beings.

# Orientation Map



1. ON/OFF
2. Orekari Estudio & Salomé Wackernagel
3. Tobias Purfürst
4. Santiago Cirugeda (Recetas Urbanas)
5. MITKUNSTZENTRALE and guests
6. Esther Ernst

## Artistic positions

### ON/OFF, *Silver Surfer*, Cologne, 2021

The *Silver Surfer* includes as a central element the transformation of a defective escalator into a slide. The project was selected by a jury in the public tender *Neue Zugänge zum Ebertplatz*, Cologne. In the subway, the installation of the slide creates a completely new, unfamiliar function for the site. Habits of seeing and using are playfully broken. A different, freer view of dealing with the city is made possible.

*The practice of the interdisciplinary design studio ON/OFF explores the interstices and intersections of urban experience to bring citizens into a direct relationship with their surroundings. By experimenting with different technologies and tools, they aim to challenge conventional notions of inhabiting and sharing space. [onoff.cc](http://onoff.cc)*

## Orekari Estudio & Salomé Wackernagel, *Repensar la Periferia*, Pamplona, since 2017

*Repensar la Periferia* is a long-term project dedicated to reflecting on peripheral neighbourhoods in the Spanish city of Pamplona. It deals with the role of culture in these neighbourhoods, the interactions within the spaces of the periphery and their relationship with the centre. *Repensar la Periferia* aims to investigate the necessities, demands and problems that the inhabitants of these zones face on a daily basis. Repensar aims to work with the inhabitants to propose solutions. The exhibition presents the collective construction of the inflatable "burbuja" in the Etxabakoitz neighbourhood as an event space. Orekari and Salomé Wackernagel offered residents an attempted solution to the lack of community spaces in the locality. The inflatable space was handed over to the residents after the joint completion and pilot phase. It has been used ever since.

*Founded in 2013, the architectural cooperative Orekari Estudio & Salomé Wackernagel pursue the idea of developing projects that are connected to architecture, territory, art and culture - always from a social and sustainable perspective. Without leaving conventional building projects, Salomé Wackernagel and Orekari (Ioar Cabodevilla, Itxaso Iturrioz, Xabi Urroz) work in the world of participation, collaborative art and organic construction. They use architecture as a vehicle for regeneration, urban transformation and as a driving force for cultural and artistic change. [orekari.coop](http://orekari.coop) and [salomewackernagel.eu](http://salomewackernagel.eu)*

## Tobias Purfürst, *Why Are You Here?* Berlin, 2022

*Why Are You Here?* is a sound installation created in 2022 based on field recordings in the Fennpfuhl neighbourhood of Lichtenberg. Away from the traffic noise that cuts through areas of the Fennpfuhl and separates them sonically, acoustic islands are found between the different types of prefabricated buildings. The acoustic islands lend the outdoor area a characteristic reverberation through the sound reflections of the smooth facades; they amplify the sounds of the residents and carry them across the squares. Based on impulse responses that acoustically re-model these reverberant spaces, the installation becomes a sonic vehicle for a composition that poetically fuses recordings of the Fennpfuhl everyday of the local people with recordings of different natural spaces in a fictional way, giving it new qualities for reflection and discovery.

*Tobias Purfürst is a freelance music producer and sound artist from Berlin. His field of work ranges from experimental electronic music and multimedia installations to compositions and sound design for film, video art and performance. Classically trained on the piano, he has expanded his musical approach by programming sounds and working on generative sound art, thereby creating cross-genre listening experiences. [tobiaspurfuerst.com](http://tobiaspurfuerst.com)*

## Santiago Cirugeda (Recetas Urbanas), *Kuvas S.C.*, Seville, 1997

The postcard installation based on the work *Kuvas S.C.* exemplifies the use of legal grey areas when working with over-bureaucratized public space, in which it is hardly possible to find solutions to urgent problems at short notice and with the participation of residents. In this specific case, the lack of playgrounds in a neighbourhood of Seville could not be addressed

because of many obstacles. Santiago Cirugeda then used the legal framework to set up a construction container and misused it to install a seesaw.

*The work of Recetas Urbanas is essentially concerned with the city as a field of experimentation and as a place for resolving conflicts. Themes such as ephemeral architecture, reuse of materials, strategies for the occupation of places as well as mediation and participation are of central importance. Recetas Urbanas was founded in 2008 by Santiago Cirugeda and Alice Attout. The projects are almost always implemented in collaboration with other individuals and groups. [recetasurbanas.net](http://recetasurbanas.net)*

## MITKUNSTZENTRALE, kiosk with fungi, material research and poster series, Berlin, 2021

The MITKUNSTZENTRALE kiosk, which can be quickly set up and refilled as a module for the direct exchange of information, offers a space for diverse thematic settings. In the context of *NachSpielZeit*, the focus is on reviving old furniture and using fungi as one do-it-together strategy of architecture. MITKUNSTZENTRALE is concerned with the ability of fungi to decompose residues and transform them into inorganic matter. Fungi are thus used to produce new building and composite materials from structural remains.

*Valeria Fahrenkrog, Marcos García Pérez, Erik Göngrich, Rahel Velia Jacob, Nora Wilhelm and guests act as MITKUNSTZENTRALE. The MITKUNSTZENTRALE at the Haus der Materialisierung exists since 2019 and sees itself as a center of sculptural commons, set up through artistic practices of recycling materials, stories and ideas. Together with various partners, MITKUNSTZENTRALE investigates and develops material cycles for leftover and used materials, for food and objects. The guests at NachSpielZeit are: Rodney LaTourelle and the Institute of Biotechnology - Department of Applied and Molecular Microbiology at the TU Berlin. [mitkunstzentrale.de](http://mitkunstzentrale.de)*

## Esther Ernst, Ortsbildpflege Fennpfuhl, Berlin, 2022

The drawing installation *Ortsbildpflege Fennpfuhl (Fennpfuhl's Preservation of local heritage)* is the result of intensive walks and stays over several weeks in the Fennpfuhl neighbourhood. Esther Ernst records her observations with text and images. In doing so, she works closely to methods of critical cartography, as she records what happens immaterially in a place, what takes place and how the world resonates. In her Fennpfuhl work, she displays her translated and created space of necessities, dreams, misplanning, thoughts, speculations and off-beat feelings, as well as stories of people, plants and animals.

*Esther Ernst lives and works in Berlin and Solothurn. "Drawing is my home. I love observing the world. Life, drawing and note-taking constantly fuel each other. I need writing and drawing to understand what is happening around me, in reaction to the world and myself."*  
[esther-ernst.com](http://esther-ernst.com)

# The curators

## Susanne Bosch

Artist, artistic researcher, interface activist, lives in Berlin. "For me, art is a practice for entering into dialogue about social, political and historical events, as well as an interface where, through/with aesthetic forms, a different way of dealing with given conditions can be tested." [susannebosch.de](http://susannebosch.de)

## Georg Zolchow

Curator, project manager and researcher from Berlin with a focus on art in public space and participatory practice. Georg works freelance with a variety of cultural agents and institutions. For several years he worked at the platform for contemporary art *hablarenarte*, Madrid.